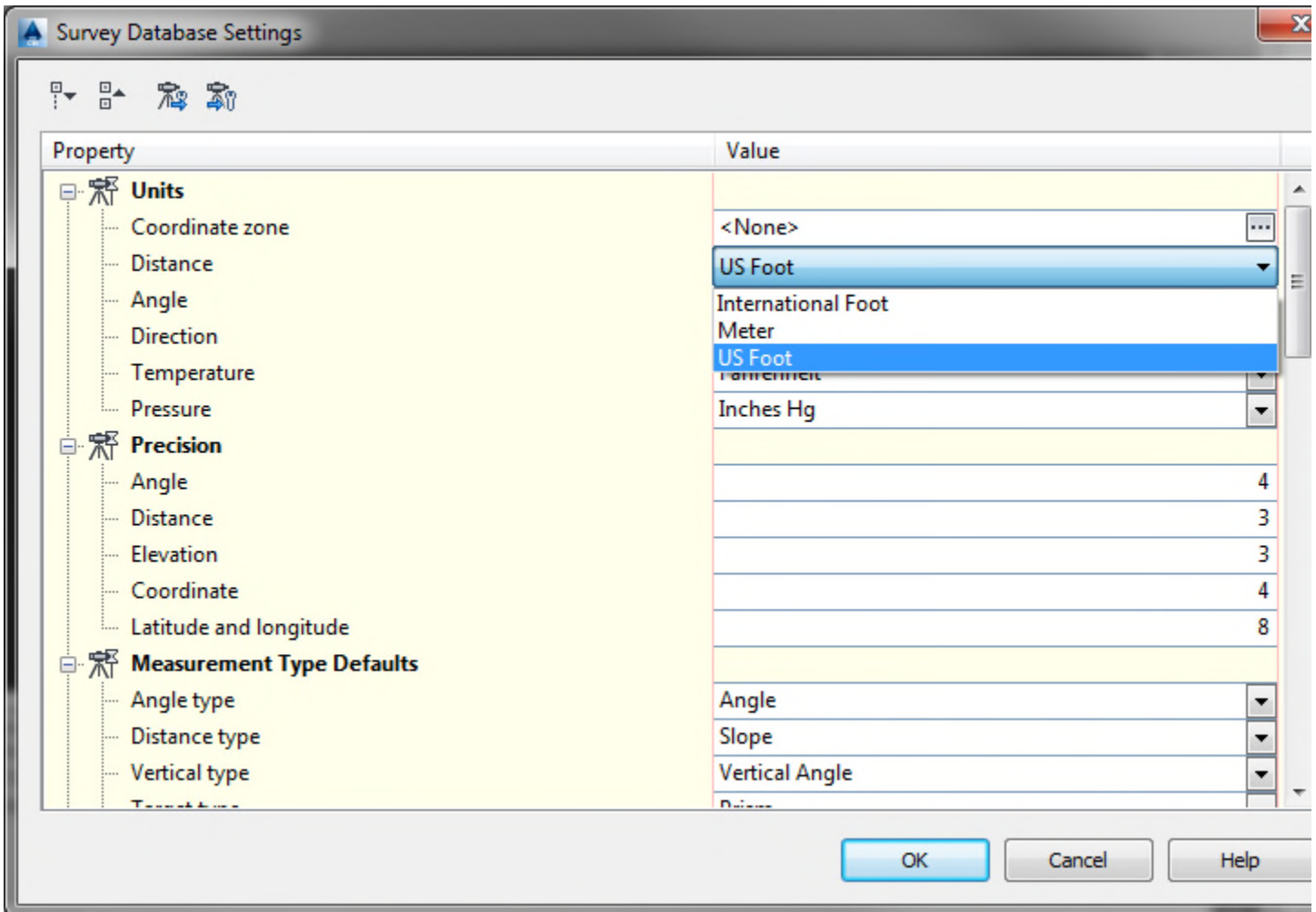


James Ross

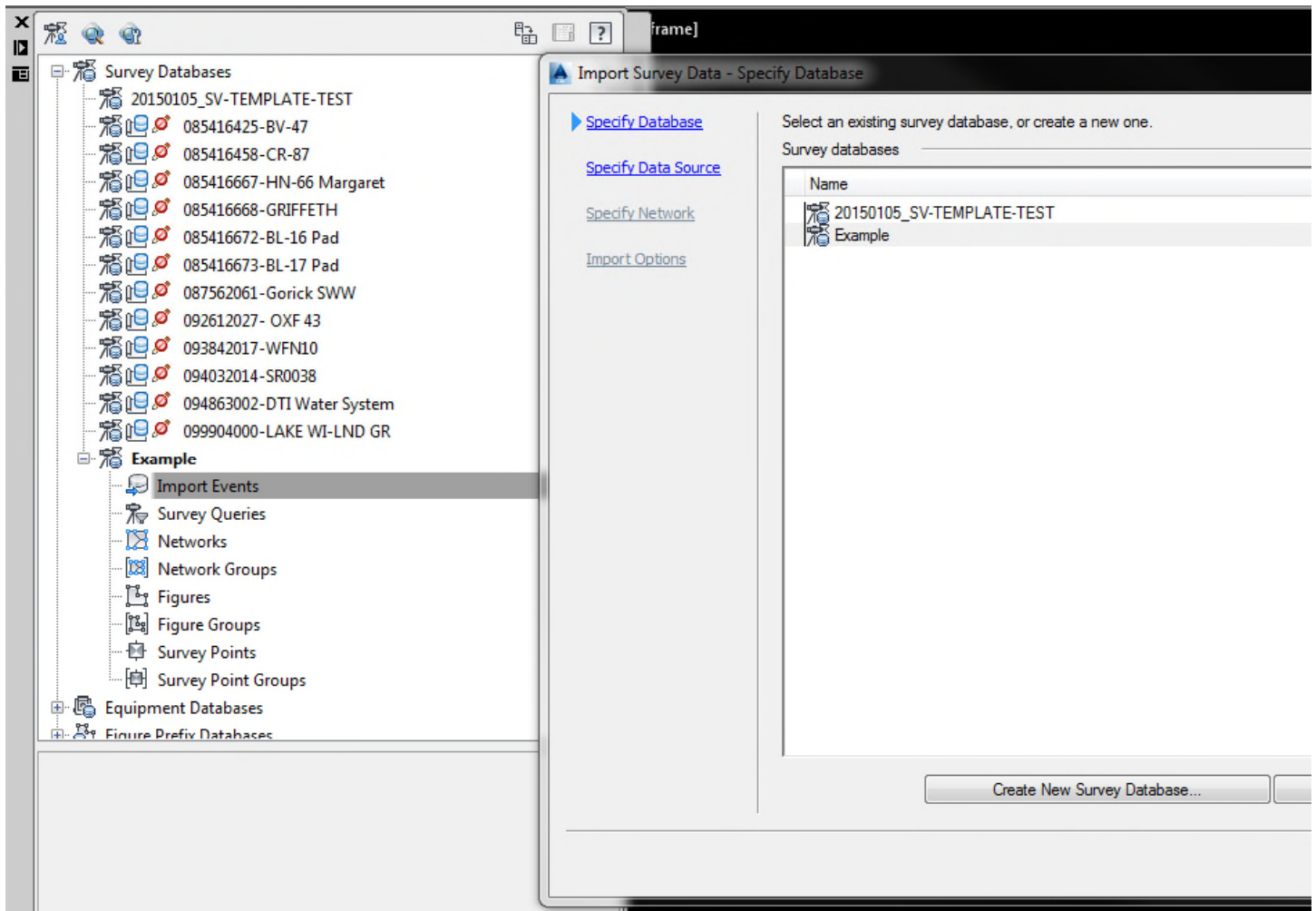
To: Survey (SV) Service Area
Cc: Gerald Hesselman
Subject: Survey Import - US Foot vs. International Foot
Importance: High

Always always check these settings **before** performing any import event:



Your pulldown menu will show three (3) choices as shown above. You always want to have “US Foot” (US Survey Foot) selected as your distance unit, and ***never*** “International Foot”. This *should be* the default setting on all Civil 3D machines, but we have discovered several instances where this was not the case.

The setting is accessed during the import event by clicking the button “Edit Survey Database Settings” as shown below:



If you notice that your settings are defaulted to “International Foot”, please contact either myself, Gama Flores, Eric Yost or Gerry Hesselman so we can look into it.

Incidentally, if you set the “Coordinate Zone” to a Projected State Plane Coordinate Zone rather than “<none>”, US Survey Foot is automatically selected as the Distance Unit.

Please always check these settings when importing survey data!

RETTEW

We answer to you.

An *Engineering News-Record* Top Design Firm

James Ross

5031 Richard Lane

Suite #111

Mechanicsburg, Pa. 17055

Office: 717.697.3551 x3394

www.rettew.com